

times change **copper remains**

KEMBLA[®]

COPPER TUBE TO
EUROPEAN STANDARD
BS EN 1057



PUBLICATION E35/09

KEMBLA® COPPER TUBE TO EUROPEAN STANDARD BSEN1057

MM Kembla is a world class producer and Australia's leading supplier of copper tube and manufactures under the famous KEMBLA® brand name. MM Kembla has a comprehensive range of tube and fittings products to comply with a variety of International Standards.

Included in the KEMBLA® range is European Standard BS EN 1057 copper tube, the specified copper plumbing tube standard used in Europe, Hong Kong, China, Singapore, Malaysia, the Middle East and other international locations.

KEMBLA® copper tube is manufactured to fully conform to BS EN 1057 specifications and is available in either bare, Kemlag Plus® lagged tube or Kemline Plus® lagged tube for use in hot, cold and fire rated applications.

The KEMBLA® BS EN 1057 product range is available in both half-hard and hard drawn tempers and supplied in diameters of 15mm through to 159mm in a variety of wall thicknesses to meet the necessary Table X, Y and Z tables. Standard lengths of 5.8m are available to facilitate ease of containerisation.

BS EN 1057 TABLE X USAGE

Above ground applications including drinking water, hot and cold water systems, sanitation, central heating, and other general purpose applications.

BS EN 1057 TABLE Y USAGE

Underground works and heavy duty requirements including hot and cold water supply, gas reticulation, sanitary plumbing, heating and general engineering.

KEMBLA® COPPER FITTINGS TO EUROPEAN STANDARD BS EN 1254

MM KEMBLA NEW ZEALAND is a leading manufacturer of a comprehensive range of copper fittings conforming to a variety of applications and International Standards. KEMBLA® fittings are marketed under the famous KEMBLA® and K Tick brand marks.

KEMBLA® European Standard fittings are manufactured in accordance with BS EN 1254 and are suitable for use with BS EN 1057 copper tube. All fittings are permanently marked to provide product-tracing information for the life of the installation. Refer to the 'European Plumbing Fittings Range' brochure or refer to our web site for product details.

PLASTIC COVERED COPPER TUBE

MM Kembla has developed Kemlag Plus® and Kemline Plus® pre-insulated copper tube for a range of plumbing applications. The products consist of BS EN 1057 tube encapsulated in a tough, solid extruded polyethylene jacket.

This polyethylene sheathed tubing is suitable for use in a variety of applications including; burying in corrosive soils, laying under floors and concrete slabs (where approved), chasing into walls and masonry, exposed or aggressive environments. The covering is coloured white. This insulation will soften at elevated temperatures and the product should not be used for installations operating continuously at temperatures above 90°C.

Kemlag Plus® insulation is internally profiled to entrap air and provide a thermal barrier. It is suitable for both hot and cold water plumbing and is useful in preventing condensation.

..... KEMBLA AUSTRALIA KEMLAG PLUS® COPPER TUBE IS EN 1057-X 15 X 0.7 HH1213608



Kemline Plus® has a tough, thin, space-saving covering. The moisture resistant jacket makes the product suitable for cold water applications and where tube may be concealed or exposed to aggressive environments. This tube is useful in preventing condensation and is also suitable for gas line installations.

..... KEMBLA AUSTRALIA KEMLINE PLUS® COPPER TUBE IS EN 1057-Y 15 X 1.0 HH2313708



MM Kembla has developed a new Fire Retardant polyethylene jacket that is available in both Kemlag Plus® and Kemline Plus® and is often specified in fire-sensitive locations. These products are approved to BS476 for Spread of Flames and BS6853 for Toxic Emissions and are also useful in preventing condensation. More information can be provided upon request.

===== KEMBLA AUSTRALIA KEMLINE PLUS® FIRE RETARDANT TUBE ===== COPPER TUBE IS EN1057-X



KEMBLA® COPPER TUBE - TABLE X

NOMINAL DIAMETER (mm)	NOMINAL THICKNESS (mm)	MAXIMUM WORKING PRESSURES†			MASS/LENGTH* (kg/5.8m)	LENGTHS/BUNDLE	LAGGED SIZES	
		ANNEALED	HALF HARD	HARD			KEMLINE (mm)	KEMLAG (mm)
15 #	0.7	4 500	5 800	7 100	1.63	100	15	15
22 #	0.9	3 900	5 100	6 200	3.09	50	22	22
28 #	0.9	3 100	4 000	4 800	3.98	50	28	28
35	1.2	3 300	4 200	5 100	6.61	50	35	35
42	1.2	2 700	3 500	4 300	7.98	50	42	42
54	1.2	2 100	2 700	3 300	10.33	30	54	54
66.7	1.2	1 700	2 000	2 700	12.81	25	66.7	
76.1	1.5	1 800	2 400	2 900	18.24	25	76.1	
108	1.5	1 300	1 700	2 000	26.04	10	108	
133	1.5	1 000	1 400	1 700	32.15	10		
159	2.0	1 200	1 500	1 800	51.18	5		

KEMBLA® COPPER TUBE - TABLE Y

NOMINAL DIAMETER (mm)	NOMINAL THICKNESS (mm)	MAXIMUM WORKING PRESSURES†			MASS/LENGTH* (kg/5.8m)	LENGTHS/BUNDLE	LAGGED SIZES	
		ANNEALED	HALF HARD	HARD			KEMLINE (mm)	KEMLAG (mm)
15 #	1.0	6 700	8 700	10 400	2.28	100	15	15
22 #	1.2	5 300	6 900	8 400	4.07	50	22	22
28 #	1.2	4 200	5 500	6 500	5.24	50	28	28
35	1.5	4 100	5 400	6 500	8.19	50	35	35
42	1.5	3 400	4 500	5 400	9.90	50	42	42
54	2.0	3 600	4 700	5 600	16.95	30	54	54
66.7	2.0	2 800	3 700	4 500	21.09	25	66.7	
76.1	2.0	2 500	3 300	3 900	24.15	25	76.1	
108	2.5	2 200	2 900	3 400	42.99	10	108	

† Based on individual tempers for temperatures up to 65°C. Annealed values apply when tubes are softened during jointing or fabrication.

* Based on nominal diameter and thickness.

Manufactured in half-hard temper, all other sizes are hard drawn.

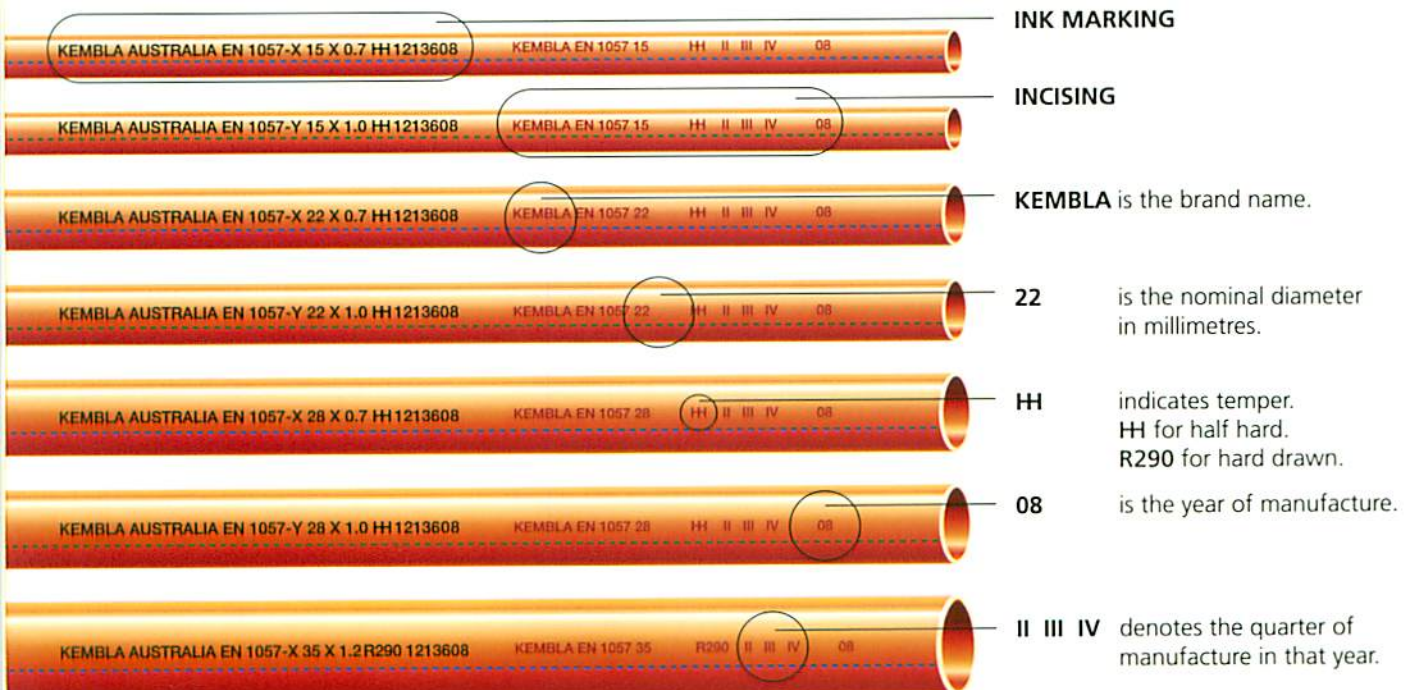
Table Z sizes are available upon request.

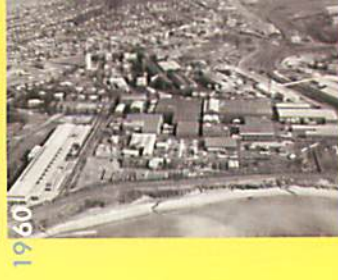
BARE COPPER TUBE INK MARKINGS AND INCISING

INK MARKING ' KEMBLA AUSTRALIA EN1057 - X 15 X 0.7 HH (Production Code) '

where ' EN1057 - X / EN1057 - Y ' denotes the classification. Blue for X. Green for Y.

INCISING ' KEMBLA EN1057 15 HH II III IV 08 '





MM Kembla was established in 1916 at Port Kembla, south of Sydney, in the state of New South Wales, Australia. It was from this location that the famous **KEMBLA®** brand name originated. The company has been manufacturing copper products on that site since 1918 and first made copper tube there in 1920.

The factories in Port Kembla and Auckland are both certified as Quality Endorsed facilities to ISO9001 by SAI Global, as shown by the Certificates of Registration below.



www.kembla.com.au

MM KEMBLA AUSTRALIA
 Gloucester Boulevard,
 Port Kembla,
 NSW 2505, Australia
CORRESPONDENCE
 PO Box 21 Port Kembla,
 NSW 2505, Australia
TELEPHONE
 Domestic: (02) 4223 5200
 International: + 61 2 4223 5200
FACSIMILE
 Domestic: (02) 4223 5235
 International: + 61 2 4223 5235
EMAIL
 tubesales@kembla.com.au

MM KEMBLA NEW ZEALAND
 21 Sir William Avenue,
 East Tamaki,
 Auckland, New Zealand
CORRESPONDENCE
 PO Box 51-525 Pakuranga,
 Auckland, New Zealand
TELEPHONE
 Domestic: (09) 274 0111
 International: + 64 9 274 0111
FACSIMILE
 Domestic: (09) 274 0347
 International: + 64 9 274 0347
EMAIL
 sales@mmkembla.co.nz

