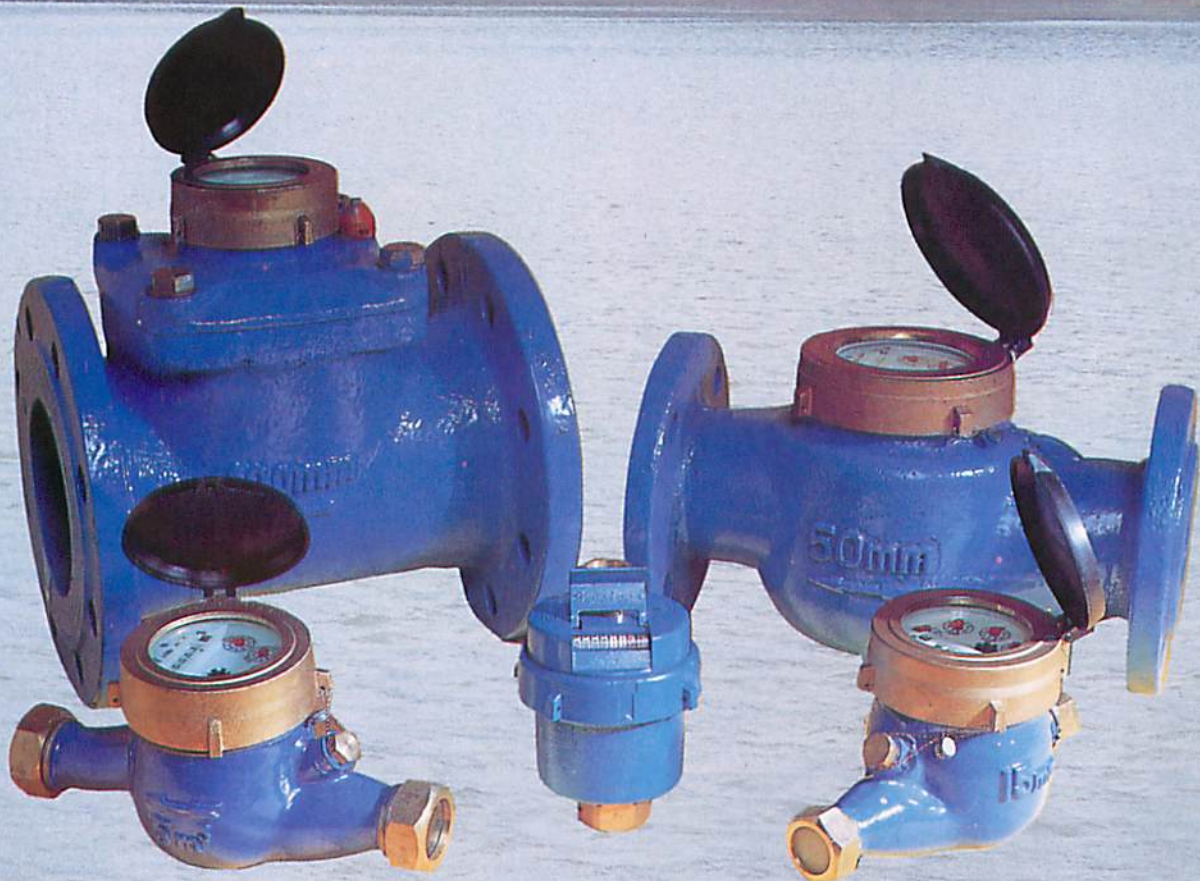


# ***DUCTILE WATER METER***



## **DUCTILE PTE LTD**

NO. 5 DEFU LANE 6 SINGAPORE 539367  
OFFICE TEL: (65) 62845511, 62895698 (A/C) FAX: (65) 62851930  
WAREHOUSE TEL: (65) 62835369 FAX: (65) 63824579  
E-mail: ductile@mbox2.singnet.com.sg  
<http://www.ductile.com.sg>

# HORIZONTAL HELIX DETACHABLE MAGNET-DRIVE WATER METER TYPE LX LG 80-200

## FEATURES

- Word-wheel counter mechanism for direct reading
- Wide measuring range which ensure high flow accuracy
- Steady curve characteristic
- Complying to ISO 4064B
- High continuous flow capacity which lower head loss

## METER DESIGN

- Durable body guarantee a longer service life
- Absolute corrosion resistance
- Universal interchangeable insert
- Outer calibration device, anti-magnet megnnet mechanism

## WORKING CONDITION

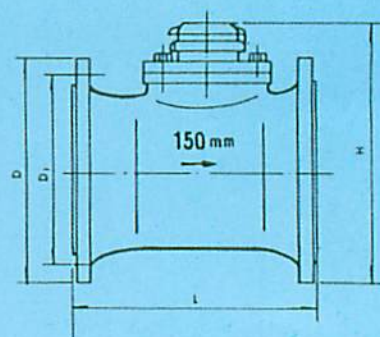
- Working temperature  $\leq 50^{\circ}\text{C}$
- Working pressure  $\leq 1\text{ MPa}$

## METROLOGICAL DATA

Meter size DN (mm)	Measuring Class	Nominal Flow rate $Q_n$ $\text{m}^3/\text{h}$	Minimum Flow rate $Q_{\text{min}}$	Transitional Flow rate $Q_t$	Min. reading	Mix. reading
			$\leq \text{m}^3/\text{h}$		$\text{m}^3$	
80	A	40	3.2	12	0.01	999999.99
	B		1.2	8		
100	A	60	4.8	18		
	B		1.8	12		
150	A	150	12	45	0.01	999999.99
	B		4.5	30		
200	A	250	20	75		
	B		7.5	50		

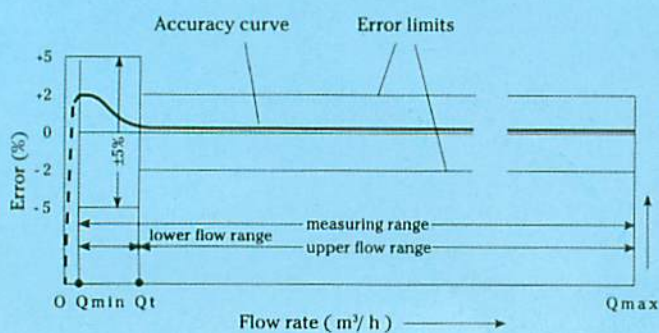
## DIMENSIONS AND WEIGHTS

Meter size DN (mm)	Length L mm	Height H mm	Connecting Flange			Weight Kg
			Outer Dia. D	Bolt. Circle Dia. $D_1$	Connecting Bolt x pcs	
80	225	265	200	160	M 16X8	15
100	250	275	220	180	M 16X8	18
150	300	305	285	240	M 20X8	31.5
200	350	375	340	295	M 20X8	46

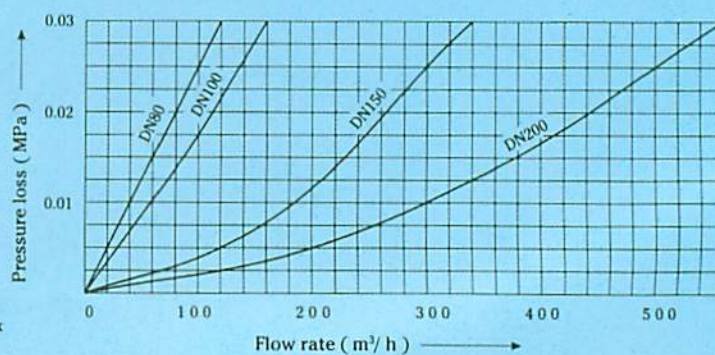


## FEATURE CURVE DIAGRAM

Flow error curve



Pressure loss curve



# TYPE MT-EX-D 15-50 FAN WHEEL DRY-DIAL WATER METER

## FEATURE

- Max flowrate  $Q_{max}$  = Continuous flowrate  $Q_n$
- Wide measuring range which ensure high flow accuracy
- Steady curve characteristic
- Complying to ISO 4064B

## METER DESIGN

- Durable body guarantee a longer service life
- Absolute corrosion resistance
- Universal interchangeable insert
- Strainer helps to protect against accumulation of dirt
- Dia 15mm-40mm connection with worth pipe thread
- Dia 50mm with flanges in two ends
- MT-EX-D is hermetically sealed, dry dial register which prevents clouding
- Anti-magnet mechanism

## WORKING CONDITION

- Working temperature  $\leq 50^\circ\text{C}$
- Working pressure  $\leq 1\text{ MPa}$



DN15,20



DN25,32

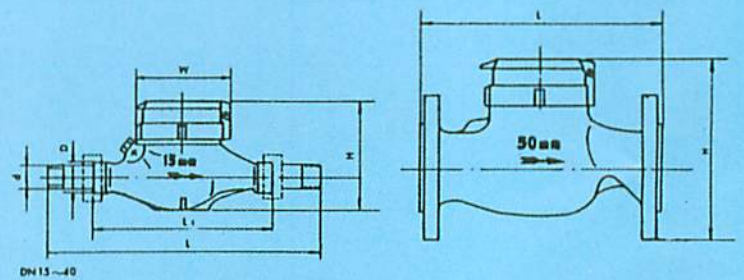


DN40,50

Meter size DN (mm)	Nominal Flow rate $Q_n$	Transitional Flow rate $Q_t$				Max. reading	Min. reading
	$\text{m}^3/\text{h}$	$\leq \text{m}^3/\text{h}$					
		A	B	C	D		
15	1.5	0.15	0.12	0.045	0.03	9999.999	0.0001
20	2.5	0.25	0.2	0.075	0.05	99999.999	0.0001
25	3.5	0.35	0.28	0.105	0.07		
32	6	0.6	0.48	0.18	0.12	999999.999	0.001
40	10	0.1	0.8	0.3	0.2		
50	15	4.5	3	1.2	0.45		

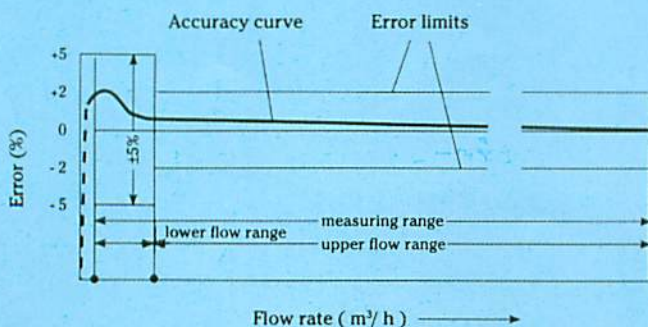
## DIMENSIONS AND WEIGHTS

Meter Size	DN	(mm)	15	20	25	32	40	40	50
Length	L	mm	256	294	310	384	375	438	280
	L1	mm	165	190	190	260	246	300	--
Width	W	mm	98	98	103	103	125	135	126
	H	mm	115	114	114	127	144	153	180
Commencing thread	d		ZG 1/2"	ZG 1/2"	ZG 1"	ZG 1 1/2"	ZG 1 1/2"	ZG 1 1/2"	GB2555-81
	D		G 1/2"	G 1"	G 1 1/2"	G 1 1/2"	G 2"	G 2"	FLANGE
Weight		Kg	1.8	2	2.3	3.6	5.4	5.8	16.5

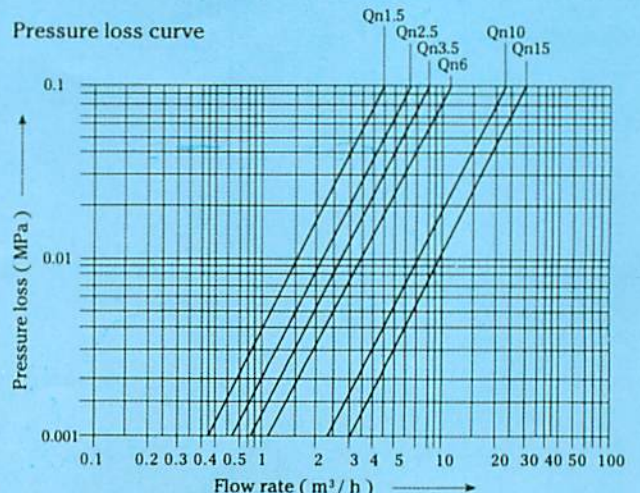


## FEATURE CURVE DIAGRAM

### Flow error curve



### Pressure loss curve



# LXH-15 ROTARY PISTON WATER METER

## DIRECTION FOR USE OF ROTARY PISTON WATER METER

### PRINCIPLE AND FEATURE

It is a volumetric type water meter complying to ISO 4064, which is recommended to be used in household pipeline by simply rotating the piston according to the actual measurement. The max working temperature and pressure are 40° and 1MPa respectively. The counter is separated from the water which provide a clearer reading.



**PISTON**

Type	Class	Nominal	Max.	Transitional	Min.	Start - up	Dial registration	
		flow	flow	flow	flow	flow	From	up to
LXH-15	C	M <sup>3</sup> /h					M <sup>3</sup>	
		1.5	3	0.0225	0.015	≤0.004	0.0001	9999

### ERROR TOLERANCE

The error is ±5% in range between transitional flow rate and min flow rate.  
The error is ±3% in range between transitional flow rate and max flow rate.

### DIMENSION & WEIGHT

TYPE	LENGTH mm	WIDTH mm	ECCENTRIC DISTANCE mm	CONNECTING THREAD D	WEIGHT KG
LXH-15	110	94.6	22.50	G 3/4"	0.81

### INSTALLATION AND APPLICATION

- 1) The direction of the flow must coincide with the arrow shown on the body.
- 2) Meter is not recommended to be used for water exceed 40°C and corrosive liquids.
- 3) Avoid direct shining and submerged in water.
- 4) Ensure the pipe is free from dirt before connecting up the meter.