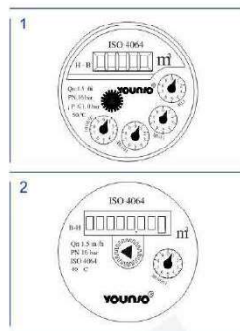


# Multi Jet Dry Type Water Meter

Multi jet, dry dial, vacuum sealed register, frost resistant, keeps clear reading for long time. magnetic transmission . Produced in the versions for cold water (30°C)and hot water (90°C) in the diameters 15 to 50mm. Long durability and elevated precision guaranteed.



**LXSG(R)-15E1**  
(15mm~50mm)



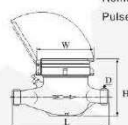
## Option



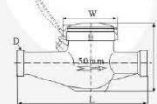
LXSG-15E1/F

LXSG-15E1/S(Plastic body)

## Dimension:



Remote transmission device can be added upon request  
Pulse output 10L/Pulse, 100L/Pulse



Type	Size (mm)	Length (mm) L	Width (mm) W	Height (mm) H	Connecting Thread D
LXSG(R)-15E	15	165	99	104	G 3/4 B
LXSG(R)-20E	20	195/190	99	106	G 1 B
LXSG(R)-25E	25	225/260	104	120	G1 1/4 B
LXSG(R) 32E	32	230/260	104	120	G1 1/2 B
LXSG(R)-40E	40	245/300	120	155	G 2 B
LXSG(R)-50E	50	280/300	125	155	G2 1/2 B

## Features:

- Dry-dial, magnetic drive, protected against external magnetic tampering;
- Vacuum sealed register, frost resistant, keeps clear reading for long time;
- Brass body, cast iron body or plastic body, optional;
- Internal or external adjusting device, optional;
- The meters conform to ISO4064 Standard Class B;

## Working condition:

- Water temperatures ≤ 30°C; hot water meter 90°C.
- Water pressure ≤ 1MPa, (PN:1.6MPa/16bar)
- ΔP ≤ 0.1MPa

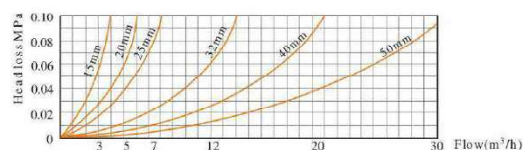
## Accuracy:

- From minimum flow-rate(qmin) inclusive , to transitional flow-rate(qt) exclusive: ±5%
- From transitional flow- rate(qt) inclusive , to overload flow- rate(qs) exclusive: ±2% (Hot water meter: ±3%)

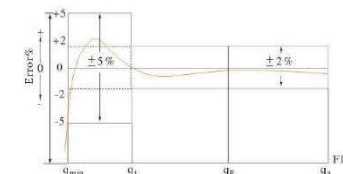
## Main technical data:

Nominal Size DN(mm)	Class of measurement	Overload Flow-rate qs(m³/h)	Permanent Flow-rate qp(m³/h)	Transitional Flow-rate qt(l/h)	Minimum Flow-rate qmin(l/h)
15	B	3	1.5	120	30
20	B	5	2.5	200	50
25	B	7	3.5	280	70
32	B	12	6.0	480	120
40	B	20	10	800	200
50	B	30	15	3000	450

## Head Loss Curve:



## Error Curve:



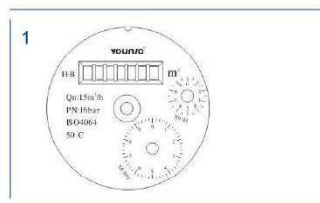
# Removable Horizontal Dry type Woltman Water Meter

Horizontal Woltman with removable insert. Sealed counter mechanism with magnetic transmission. Direct reading on numerical rolls. Rotating ring 360°. Suitable for industry and irrigation. Prepared for pulse switch mountable even after installation.



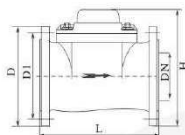
**LXLC-50E3**  
(50mm~300mm)

### Dial



• Remote transmission device can be added upon request.  
• Pulse output 1000/pulse, 10000 L/pulse.

### Dimension:



Type	Size (mm)	Length (mm) L	Height (mm) H	Outer Diameter D1	Bolt Circle Diameter D2	Connecting Bolt	Weight
							mm
LXLC-50E3	50	200	247	165	125	n-Md	kg
LXLC-65E3	65	200	260	185	145	4-M16	12
LXLC-80E3	80	225	265	200	160	4-M16	13
LXLC-100E3	100	250	272	220	180	8-M16	15
LXLC-125E3	125	250	295	250	210	8-M16	19
LXLC-150E3	150	300	302	285	240	8-20	23
LXLC-200E3	200	350	359	340	295	8-M20(1.0MPa)	30
						12-M20(1.6MPa)	42
LXLC-250E3	250	450	470	395	350	12-M20(1.0MPa)	44
				405	355	12-M24(1.6MPa)	94
LXLC-300E3	300	500	492	445	400	12-M20(1.0MPa)	97
				460	410	12-M24(1.6MPa)	114

### Working condition:

- Water temperature ≤ 30°C; hot water meter 90°C.
- Water pressure ≤ 1MPa (PN: 1.6MPa/16bar)
- ΔP < 0.1MPa

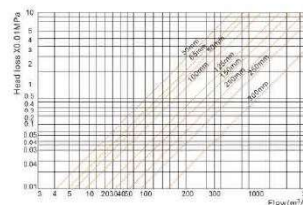
### Accuracy:

- From minimum flow-rate (q<sub>min</sub>) inclusive, to transitional flow-rate (q<sub>t</sub>) exclusive: ±5%
- From transitional flow-rate (q<sub>t</sub>) inclusive, to overload flow-rate (q<sub>s</sub>) exclusive: ±2%

### Main technical data:

Size (mm)	Class of measurement	Maximum flow (Q <sub>s</sub> )	Nominal flow (Q <sub>p</sub> )	Transitional flow (Q <sub>t</sub> )	Minimum flow (Q <sub>min</sub> )	Minimum Reading (min)	Maximum Reading (max)
		m <sup>3</sup> /h				m <sup>3</sup>	
50	B	30	15	3.0	0.45	0.002	9,999,999
65	B	50	25	5.0	0.75	0.002	9,999,999
80	B	80	40	8.0	1.2	0.002	9,999,999
100	B	120	60	12	1.8	0.002	9,999,999
125	B	200	100	20	3.0	0.02	99,999,999
150	B	300	150	30	4.5	0.02	99,999,999
200	B	500	250	50	7.5	0.02	99,999,999
250	B	800	400	80	12	0.02	99,999,999
300	B	1200	600	120	18	0.02	99,999,999

### Head Loss Curve:



### Error Curve:

